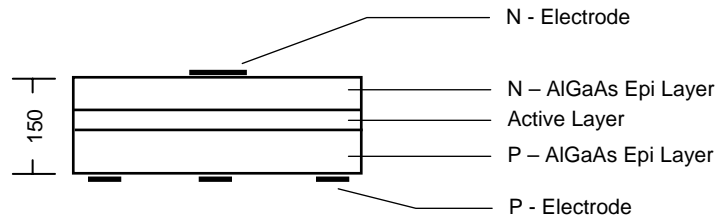
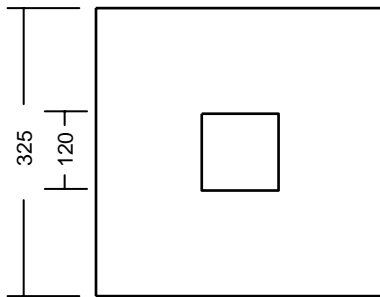


# TCS670



- ❖ Features:  
AlGaAs (DHS) / AlGaAs- substrate removed

- ❖ Outline Dimensions:



- ❖ Physical Structure:

Chip dimensions		Chip size	13 mil x 13 mil	325 $\mu\text{m}$ x 325 $\mu\text{m}$
		Thickness	6 mil	150 $\mu\text{m}$
		Bonding Pad	4.7 mil	120 $\mu\text{m}$
Electrode	Top	N (cathode)	Gold alloy	
	Backside	P (anode)	Gold alloy	

- ❖ Electro-Optical Characteristics:

Parameter	Symbol	Condition	Min.	Typ.	Max.	Unit
Forward Voltage	$V_F$	$I_F = 20\text{mA}$	-	1.90	2.30	V
Reverse Voltage	$V_R$	$I_R = 10\mu\text{A}$	5	-	-	V
Wavelength*	$\lambda_P$	$I_F = 20\text{mA}$	-	670	-	nm
Output Power	$P_O$	$I_F = 20\text{mA}$	1.0	1.4	-	mW
Switching time	$t_r / t_f$	$I_F = 20\text{mA}$	-	40	-	ns