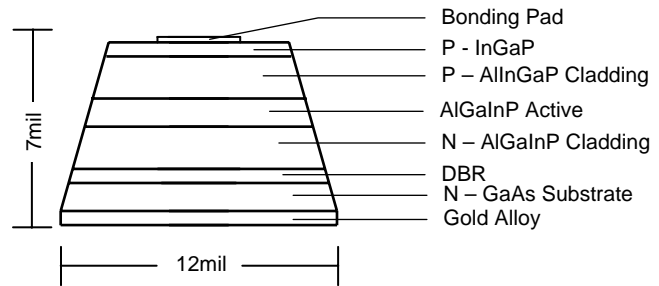
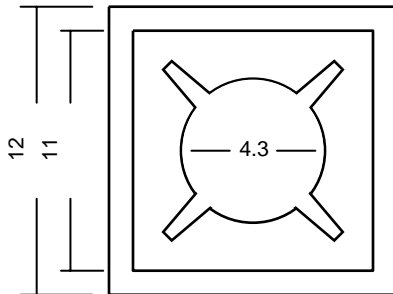


TCU12URU

❖ Features:

- AllnGaP/GaAs LED Chips
- MOVPE EPI Wafer
- MQW and DBR
- High reliability
- Roughen Surface
- Energy Saving

❖ Outline Dimensions:



❖ Physical Structure:

Chip dimensions		Chip size	12 mil x 12 mil	305 μm x 305 μm
		Thickness	7 mil	178 μm
		Emission area	11 mil	279 μm
		Bonding pad	4.3 mil	109 μm
Electrode	Top	P (anode)	Gold alloy (Aluminum optional)	
	Backside	N (cathode)	Gold alloy	

❖ Electro-Optical Characteristics:

Parameter	Symbol	Condition	Min.	Typ.	Max.	Unit
Forward Voltage	V_F	$I_F = 10\mu\text{A}$	1.30	-	-	V
		$I_F = 20\text{mA}$	-	2.00	2.40	
Wavelength	Hue	$I_F = 20\text{mA}$	627	632	637	nm
Spectral width at half height	$\Delta\lambda$	$I_F = 20\text{mA}$	-	22	-	nm
Reverse Voltage	V_R	$I_R = 10\mu\text{A}$	5	-	-	V
Luminous Intensity	I_V	E	30	-	-	mcd
		F	40			
		G	50			

RED